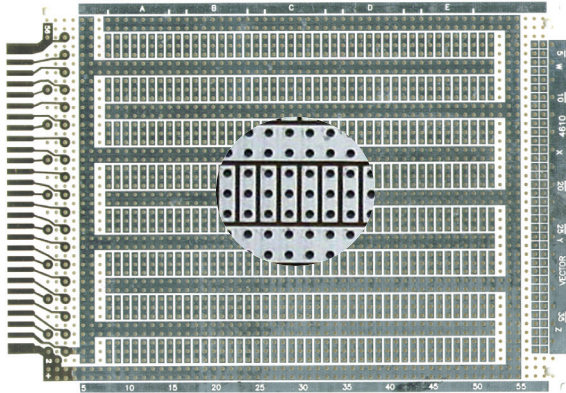


STD Bus

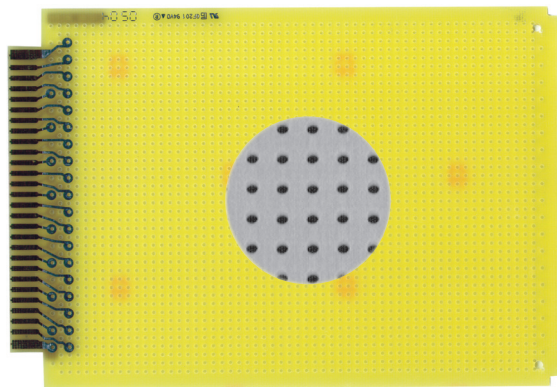


4610 4.5”H x 6.5”L x .062”TH

0.100” grid 0.42” diameter holes. Gold-plated edge contacts with 3-hole solder pad board pattern on wiring side only. Pad area for mounting of ribbon cable I/O connector, 0.280” X 0.080” 3-hole pads on one side, solder-coated copper pads. 56 gold-plated edge contacts (28 on each side) on 0.125” centers.

- 16-Pin DIP= 20
- WW Terminals: T125, T126
- Socket Pin: R32
- Solder Connector: R656-1
- WW Connector: R656-2
- Extender: 3690-16
- Card Cage: CCK13
- Material: CEM-1

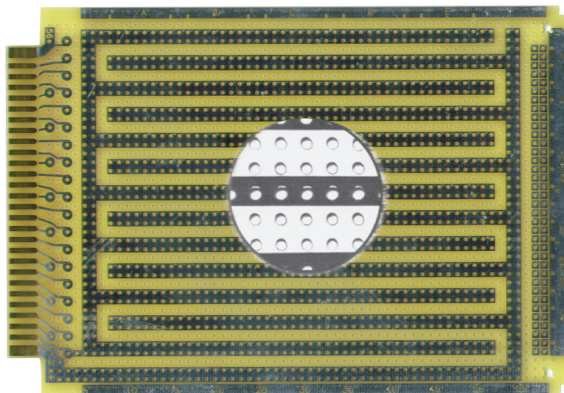
Plugbord



4610-1 4.5”H x 6.5”L x .062”TH

0.100” grid 0.42” diameter holes. Gold-plated edge contacts only. Bare prototyping board allows unrestricted component placement. 56 gold-plated edge contacts (28 on each side) on 0.125” centers.

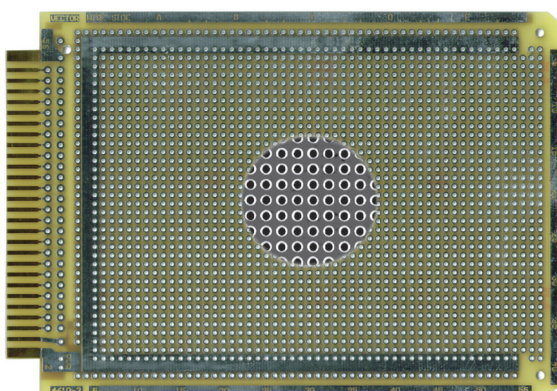
- 16-Pin DIP= 59:
- WW Terminals: T125, T126
- Socket Pin: R32
- Solder Connector: R656-1
- WWW Connector: R656-2
- Extender: 3690-16
- Card Cage: CCK13
- Material: FR-4



4610-2 4.5”H x 6.5”L x .062”TH

0.100” grid 0.42” diameter holes. Gold-plated edge contacts with interleaved busses on wiring side only, solder-coated copper pads. PAD area for mounting of ribbon cable I/O connector. 5V bus terminated to pins 1 & 2; ground bus terminates to pins 3 & 4. 56 gold-plated edge contacts (28 on each side) on 0.125” centers.

- 16-Pin DIP= 35:
- WW Terminals: T125, T126
- Socket Pin: R32
- Solder Connector: R656-1
- WWW Connector: R656-2
- Extender: 3690-16
- Card Cage: CCK13
- Material: FR-4



4610-3 4.5”H x 6.5”L x .062”TH

0.100” grid 0.42” diameter holes. Gold-plated edge contacts with Pad-per-Hole pattern on both sides, holes plated-thru. Solder-coated copper pads. Pad area for mounting of ribbon cable I/O connector. 0.080” diameter pads around each hole both sides and peripheral bus connects to edge contacts; 5V bus terminated to pins 1 & 2; ground bus terminates to pins 3 & 4. 56 gold-plated edge contacts (28 on each side) on 0.125” centers.

- 16-Pin DIP= 52
- WW Terminals: T125, T126
- Socket Pin: R32
- Solder Connector: R656-1
- WW Connector: R656-2
- Extender: 3690-16
- Card Cage: CCK13
- Material: FR-4